

Part No.

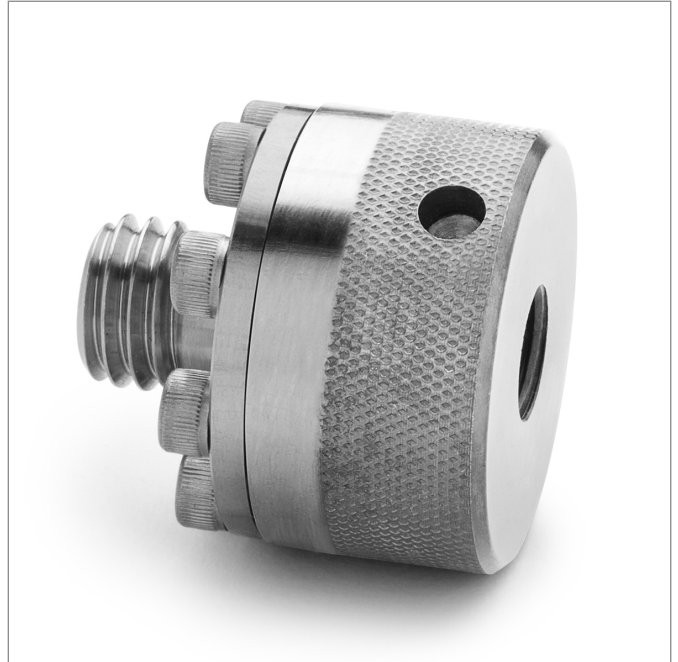
# XTHA-2FSF-QD

*Female 37 degree flare (AN/JIC) x male Quick-test, no check-valve, S.S.*

Connect a male 37° flare AN/JIC fitting to a Quick-test hose without a wrench

## Features

- A unique design allows connection to standard male 37° flare fitting using a pressure-assisted o-ring seal
- Pressure helps to seal the fitting better
- Stainless steel construction
- Made in USA



XTHA-2FSF-QD

## Specifications

Pressure Range	0 to 15000 psi (0 to 1,034 bar)
End C1	1/4"(-4) Female 37 degree (AN/JIC) Flare with Quick-Disconnect
End C2	Male Quick-test XT
Has Check Valve	No
Temperature range	0 to 140 °F (-18 to 60 °C)
Construction	Stainless Steel
Seal materials	Teflon, Viton